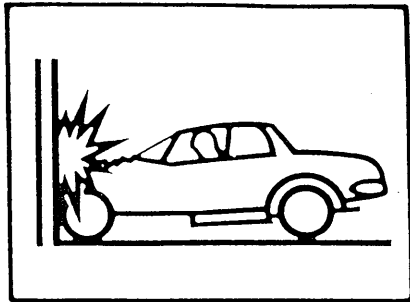
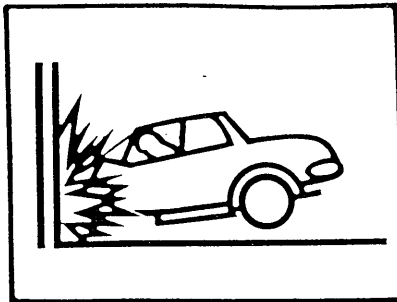


Seven Tenths of a Second

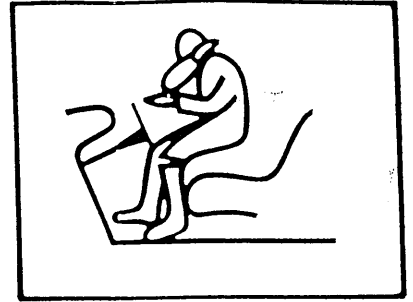
When a car hits a power pole at 80 kmh.



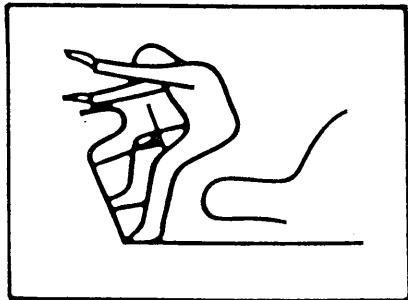
1/10th OF A SECOND: The front bumper and grill collapse.



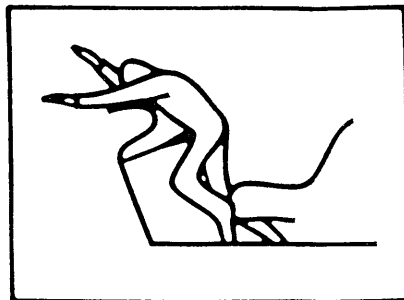
2/10th OF A SECOND: The bonnet crumples. The rear wheels leave the ground. The pole acts as a brake on the one-tonne body of the car, but the driver's body continues forward at the vehicle's original speed. A force of 20 times the force of gravity is exerted. His body now weighs 1500 kgs.



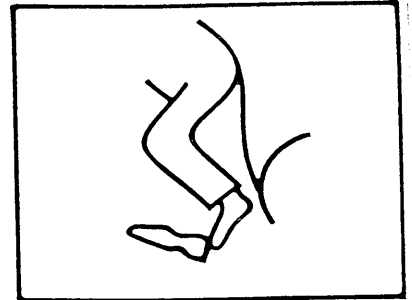
3/10th OF A SECOND: His legs snap at the knee joints. His body rises up the seat. His chest is now above the steering column.



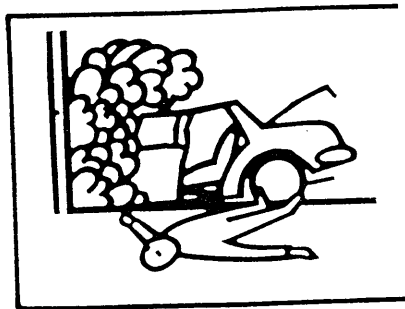
4/10th OF A SECOND: The car's front is stationary. The rear-end still travels at 60 kph. The driver's body travels forward at 90 kph.



5/10th OF A SECOND: The force of gravity impales the driver's body on jagged steering wheel shaft.



6/10th OF A SECOND: His tightly laced shoes are ripped from his feet. The spinning rear wheels fall to the ground.



7/10th OF A SECOND: Hinges tear, doors fly open. The passenger is flung out. The driver is alone. He is dead.